

**FD / HD**

---



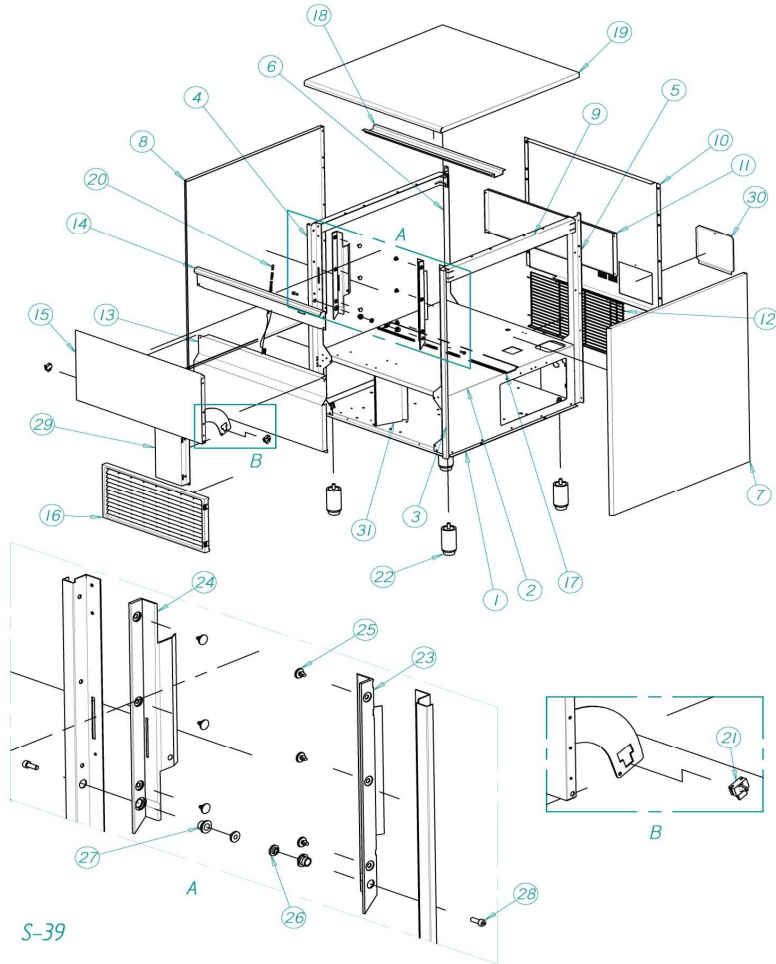
DESPIECE / REPUESTOS  
EXPLODED VIEW / SPARE PARTS  
EXPLOSIONSZEICHNUNG / ERSATZTEILE  
VUE ÉCLATÉE / PIÈCES DÉTACHÉES  
ESPLOSO / RICAMBI



# CABINET



FD / HD

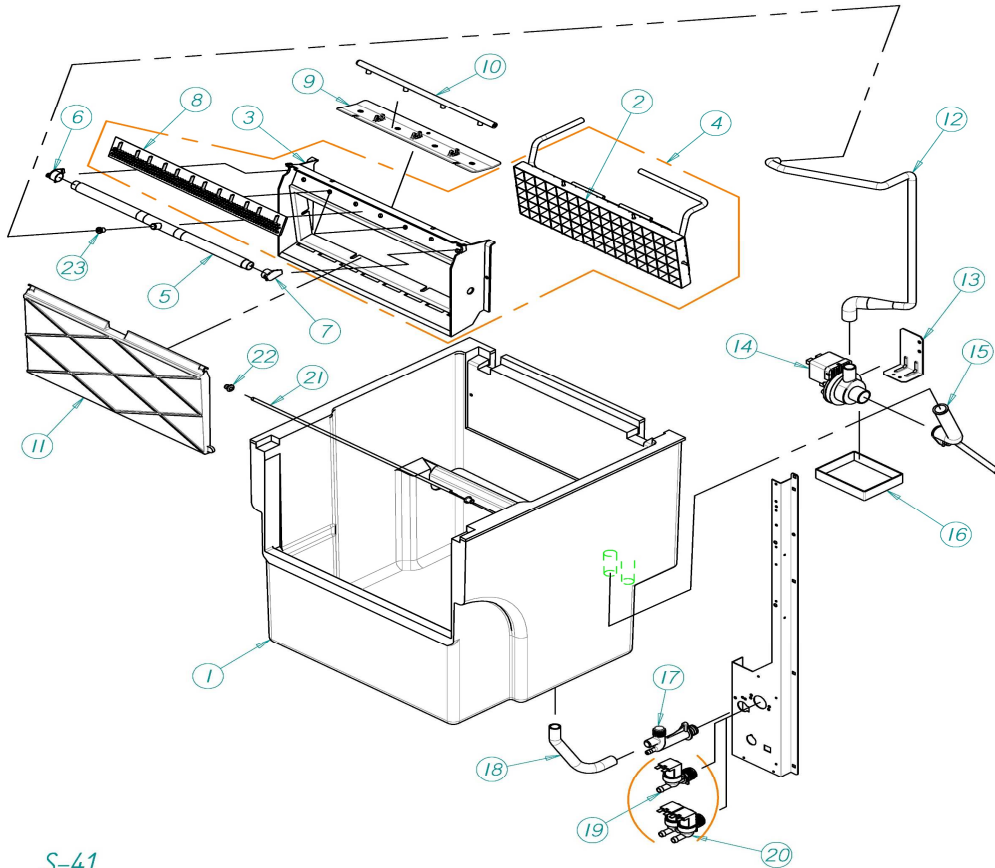


	DESCRIPTION	MODEL			
		60	90	110	140
1	BASEMENT	4160	6256	6257	
2	BRIDGE	4159	6258	6259	
3	FRONT RIGHT COLUMN	159	6260		
4	FRONT LEFT COLUMN	160	6261		
5	REAR RIGHT COLUMN	207	6263		
6	REAR LEFT COLUMN	161	6262		
7	RIGHT PANEL	6466	6285		6287
8	LEFT PANEL	6467	6286		6288
9	BRACE	557	3778		6297
10	REAR COVER	4172	6300		6301
11	REAR REINFORCEMENT	4171	-		-
12	REAR GRILL	4088	6209		2192
13	LOWER FRONT PANEL	4168	6279		6280
14	UPPER FRONT PANEL	4169	6281		6282
15	DOOR	5791	6295		6296
16	FRONT GRILL		4186		4188
17	BRIDGE REINFORCEMENT	1144	6310		6311
18	COVER REINFORCEMENT	-	6305		6307
19	COVER	4170	6283		6284
20	DOOR SPRING		702		
21	DOOR BUMPER		156		
22	LEG		1478		
23	RIGHT DOOR GUARD		82		
24	LEFT DOOR GUARD		83		
25	CLIP		113		
26	DOOR AXE BUSHING		155		
27	DOOR AXE BEARING		1001		
28	DOOR SCREW		392		
29	GRILL ADDON	-	6312		6313
30	LID		6306		
31	AIR DEFLECTOR	-	6366		4975

# FD/HD 60 BIN & HIDRAULICS PARTS



FD / HD



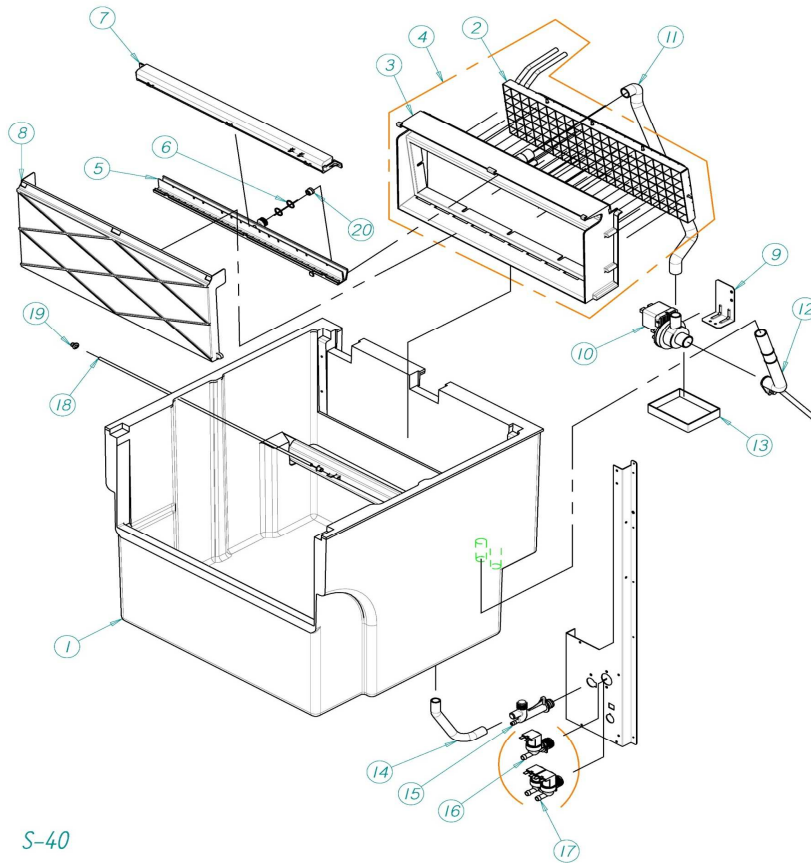
S-41

DESCRIPTION		MODEL
1	STOCK BIN	60
	EVAPORATOR	6245
2		1"
		1/2"
3	FRAME	2531
4	FRAME AND EVAPORATOR	
5	COMPLETE WATER DISTRIBUTOR	30041A
	COMPLETE WATER DISTRIBUTOR before 18233810	30041AK
6	LEFT DISTRIBUTOR CAP	2537A
7	RIGHT DISTRIBUTOR CAP	2538A
8	FLOW DISPERSION RAMP	2530
9	WATER INLET SUPPORT	6099
10	WATER DISTRIBUTOR	30041
	CURTAIN	6095A
11	CURTAIN before 18233810	30041AK
12	CONNECTING TUBE PUMP	6126
13	WATER PUMP SUPPORT	31977
	WATER PUMP SUPPORT before 18233810	4596
	WATER PUMP	
		220V/50Hz
14		4769
		220V/60Hz
		32050
		115V/60Hz
		32065
15	WATER PUMP SUCTION TUBE	4961
16	WATER PUMP TRAY	4521
17	WATER DRAIN DISTRIBUTOR	363
18	DRAIN TUBE	2222
	ELECTROVALVE 1B	
		220V/50-60Hz
19		329
		115V/60Hz
		2783
	ELECTROVALVE 2B	
		220V/50-60Hz
20		404
		115V/60Hz
		2793
21	THERMOSTAT TUBE	5437
22	JOINT	666
23	WATER RESTRICTOR	6403

CUBA Y COMPLEMENTOS HIDRAULICOS FD/HD 90-110-140



FD / HD



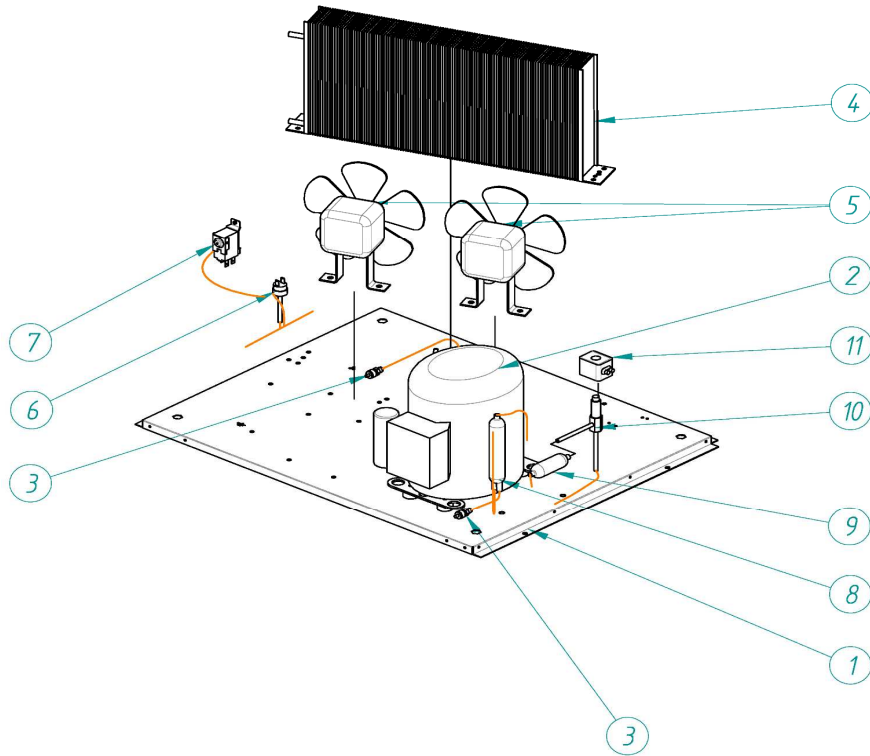
S-40

DESCRIPTION	MODEL		
	90	110	140
1 STOCK BIN	6246		6247
EVAPORATOR			
2	1"	6230	6236
	1/2"	6233	6239
3 FRAME		6091	6092
4 FRAME AND EVAPORATOR			
5 COMPLETE WATER DISTRIBUTOR		30039	30040
6 JOINT		4496	
7 WATER DISTRIBUTOR CAP		30039	30040
8 CURTAIN		6093	6094
9 WATER PUMP SUPPORT		31977	
WATER PUMP SUPPORT before 18233810		4596	
WATER PUMP			
	220V/50Hz	4769	
	220V/60Hz	32051	32052
	115V/60Hz	32066	32067
11 WATER IMPULSE PIPE		6128	
12 WATER SUCTION PIPE		4961	
13 WATER TRAY		4521	
14 DRAIN TUBE		2222	
15 ELECTROVALVE 1B			
	220V/50-60Hz	329	
	115V/60Hz	2783	
ELECTROVALVE2B			
	220V/50-60Hz	404	
	115V/60Hz	2793	
17 THERMOSTAT TUBE		6384	6385
18 JONT		666	
19 WATER RESTRICTOR		6414	

# AIR CONDENSER



FD / HD

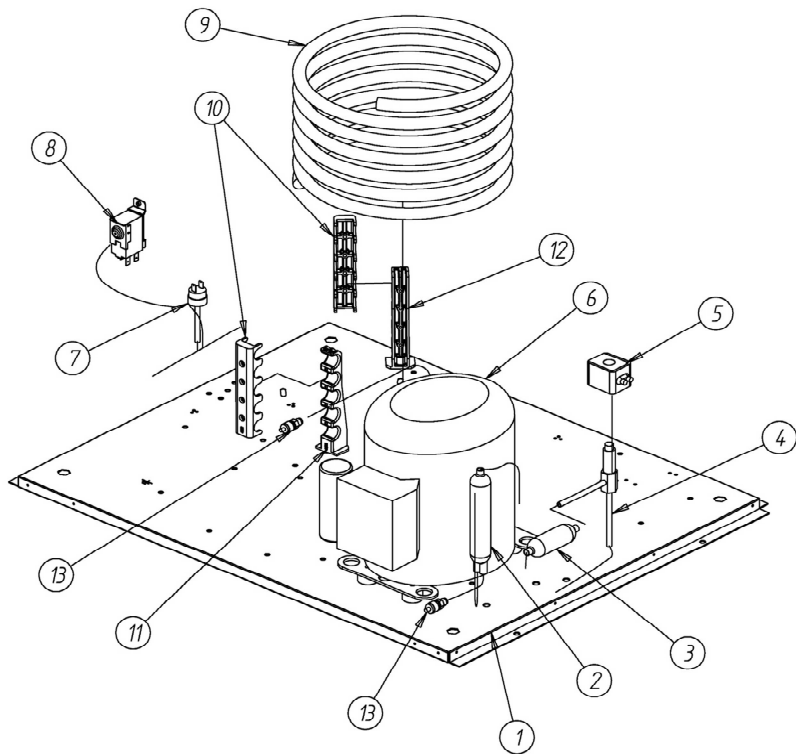


DESCRIPTION		MODEL			
		60	90	110	140
1	BASEMENT	4160	6256		6257
	COMPRESSOR				
2	220V/50HZ	6005	6515	6516	6007
	220V/60Hz	31092	81095	81098	81098
	115V/60Hz	82801	6169	6170	6171
3	REFRIGERANT LOAD VALVE	335			
4	CONDENSER	2541	487	2867	589
5	FAN MOTOR	28			444
6	HIGH PRESSURE SWITCH	334			
7	CONDENSATION PRESSURE SWITCH	7476E	2507		
8	DRIER	449	2560		
9	FILTER	448A			
10	HOT GAS VALVE	1468	1473	762	1473
11	COIL				
	220V/50-60Hz	5173			
	115V/60Hz	5414			
	EXPANSION VALVE	-	6348		

# WATER CONDENSER



FD / HD

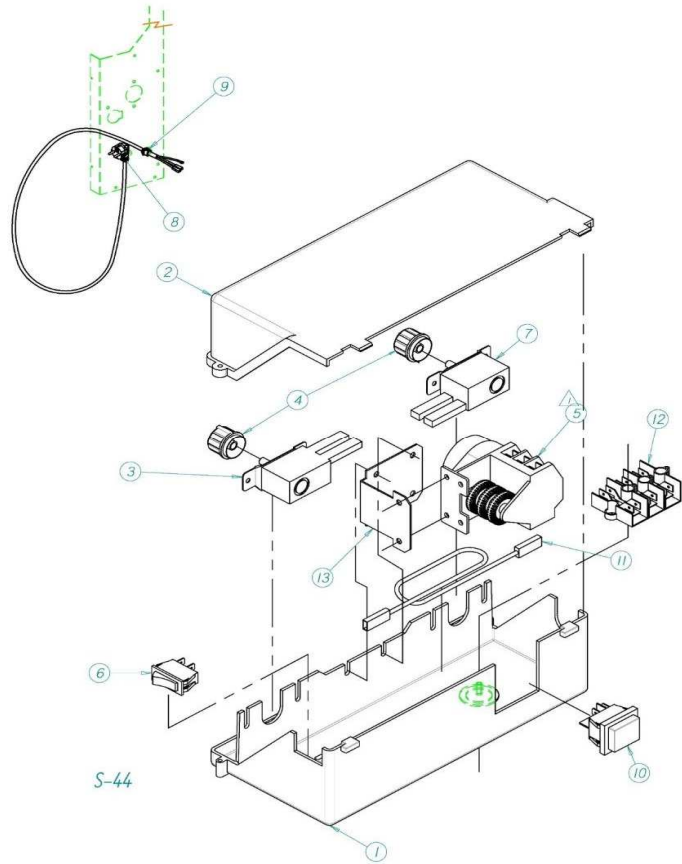


DESCRIPTION		MODEL				
		60	90	110	140	
1	BASEMENT	4160		6256	6257	
2	DRIER	449		2560		
3	FILTER		448A			
4	HOT GAS VALVE	1468	1473	762	1473	
	COIL					
5		220V/50-60Hz	5173			
		115V/60Hz	5414			
	COMPRESSOR					
6		220V/50HZ	6005	6515	6516	6007
		220V/60Hz	31092	81095	81098	81098
		115V/60Hz	82801	6169	6170	6171
7	HIGH PRESSURE SWITCH		334			
8	CONDENSATION PRESSURE SWITCH	7476E	2507			
9	WATER CONDENSER	5242	5244			
10	WATER CONDENSER SUPPORT	4032	4038			
11	WATER CONDENSER SUPPORT		4037			
12	WATER CONDENSER SUPPORT		4036			
13	REFRIGERANT LOAD VALVE		335			
	EXPANSION VALVE	-	6348			

# ELECTRIC BOX



FD / HD



	DESCRIPTION	MODEL			
		60	90	110	140
1	ELECTRIC BOARD			4789	
2	ELECTRIC BOARD COVER			4790	
3	CYCLE THERMOSTAT			153	
4	THERMOSTAT BUTTON			272	
5	10' TIMER				
	220V/50-60Hz			6173C	
	115V/60Hz			6250C	
6	COMPRESSOR SWITCH			2300	
7	FULL BIN THERMOSTAT			274	
8	SHUKO PLUG 220V/50Hz			408	
	SHUKO PLUG 208-220V/60Hz			3675	
	SHUKO PLUG 115V/60Hz			2771	
10	MAIN SWITCH			2287	
11	RESISTENCE PVC 220V			3814	
	RESISTENCE PVC 115V			4867	
12	CONNECTION POINT			5177 X 3	
13	MICRO PLATE SUPPORT			6248	