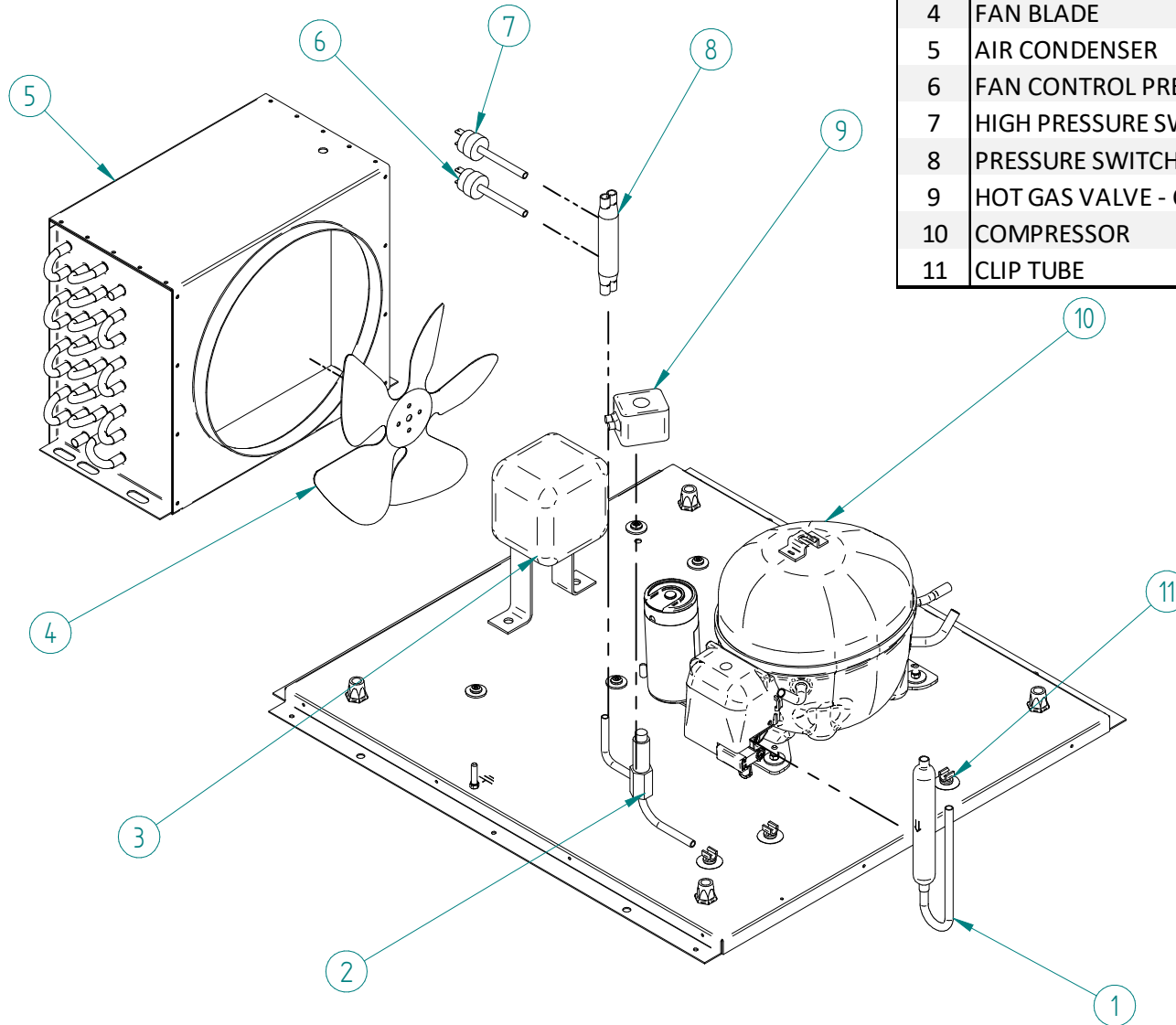
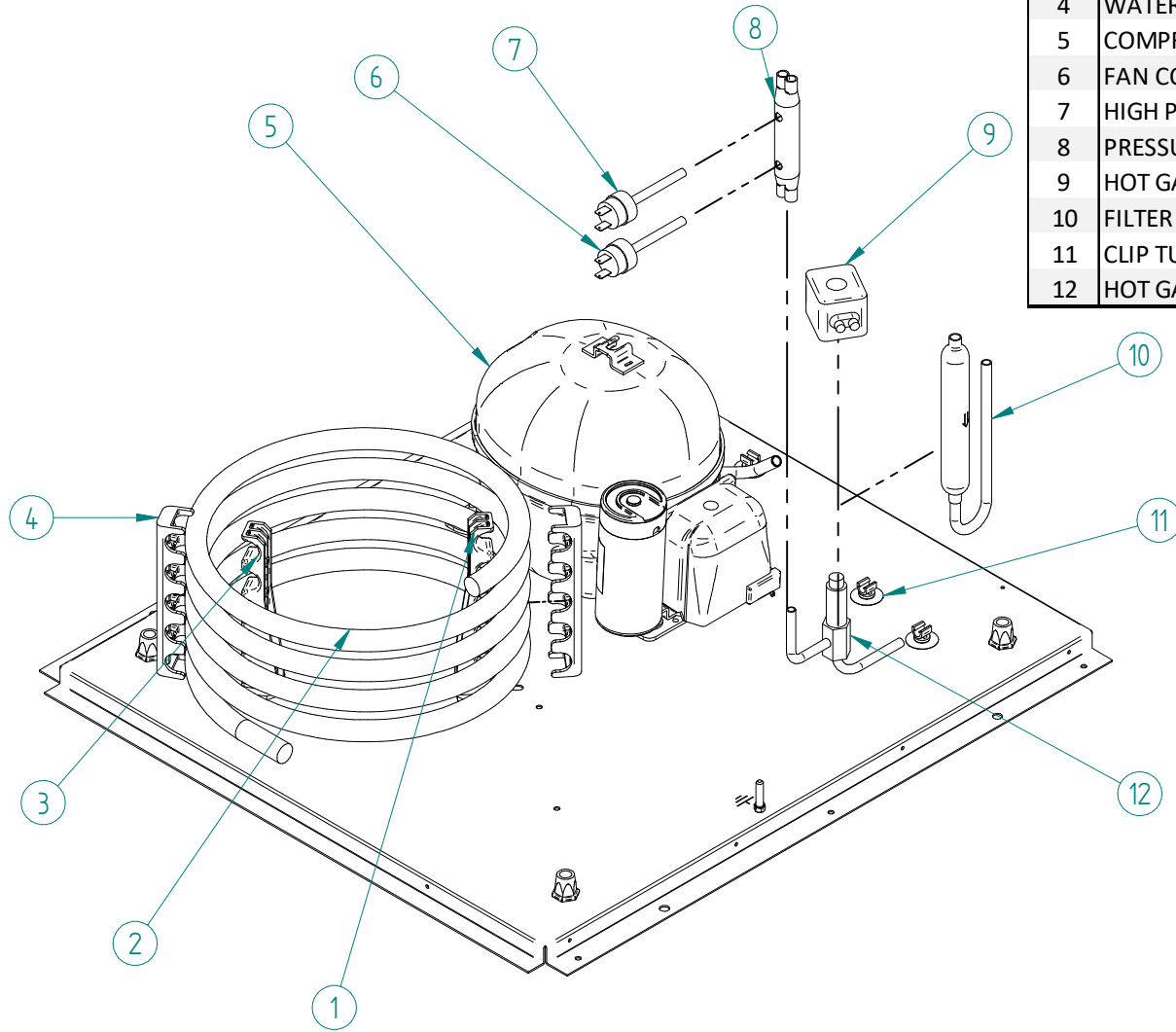




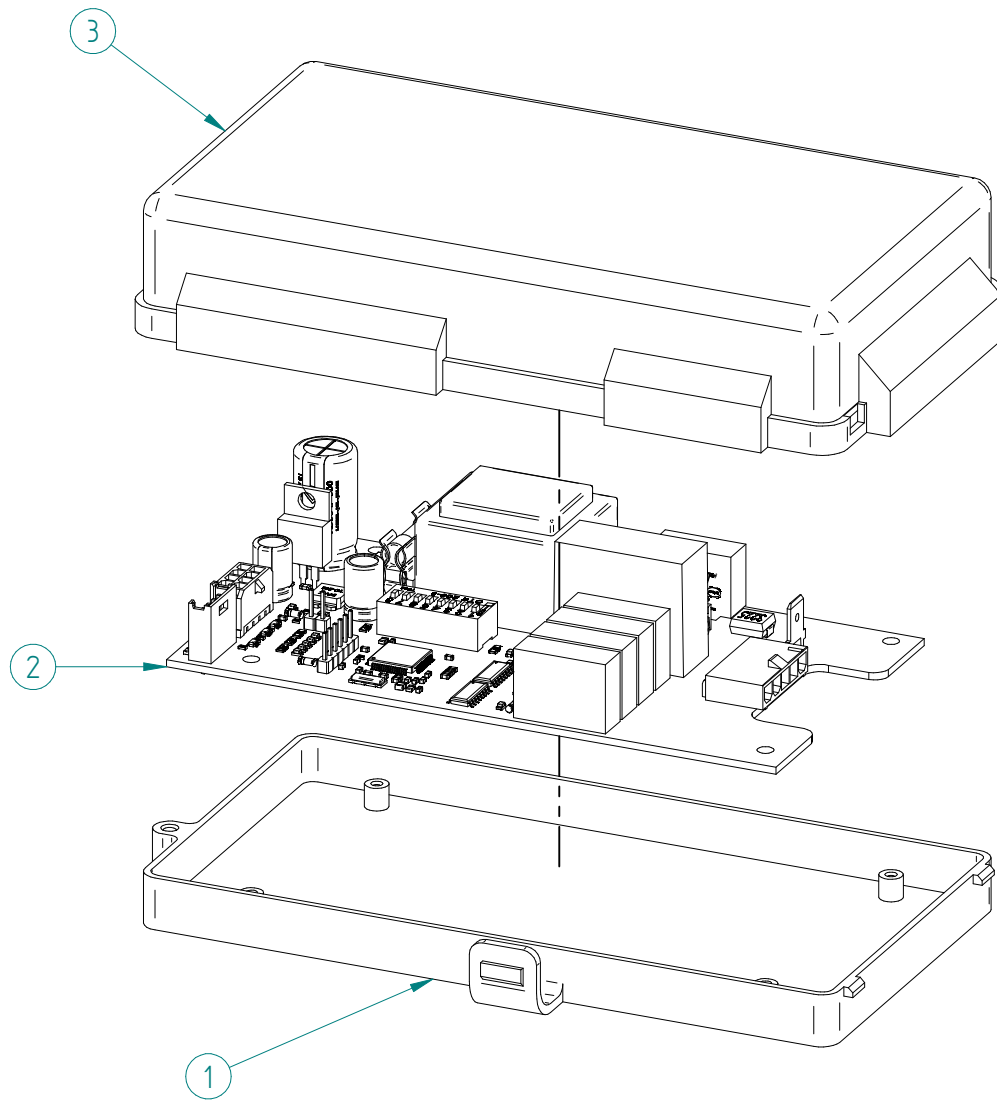
DESPIECE / REPUESTOS
EXPLODED VIEW / SPARE PARTS
EXPLOSIONSZEICHNUNG / ERSATZTEILE
VUE ÉCLATÉE / PIÈCES DÉTACHÉES
ESPLOSO / RICAMBI



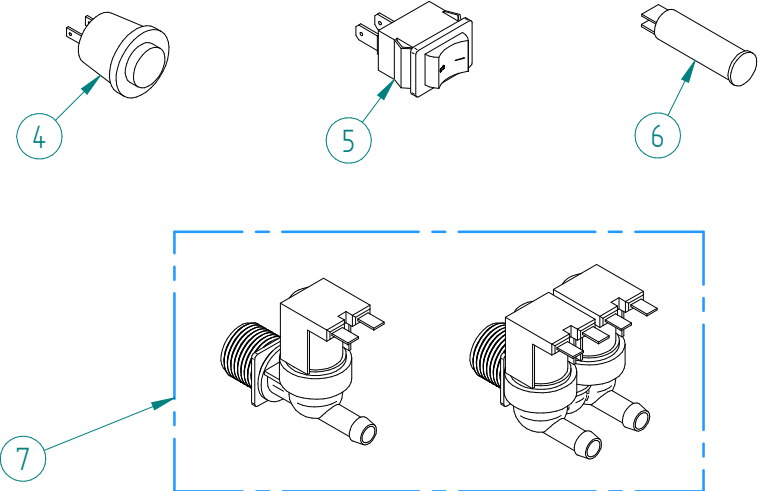
ITEM	DESCRIPTION	22-32	42	52	62	82	122
1	FILTER DRIER			7896			
2	HOT GAS VALVE - BODY	6904		1473			
3	FAN MOTOR 220V/50HZ	2170		28			445
4	FAN BLADE	587		4887			4231
5	AIR CONDENSER	31690		487A	32251		32730
6	FAN CONTROL PRESSURE SWITCH			31160E			
7	HIGH PRESSURE SWITCH			31660E			
8	PRESSURE SWITCH COLLECTOR			31444			
9	HOT GAS VALVE - COIL 220V/50HZ	6906				5173	
10	COMPRESSOR 220V/50HZ	33311	31302	33303		31306	31307
11	CLIP TUBE	337				3533	

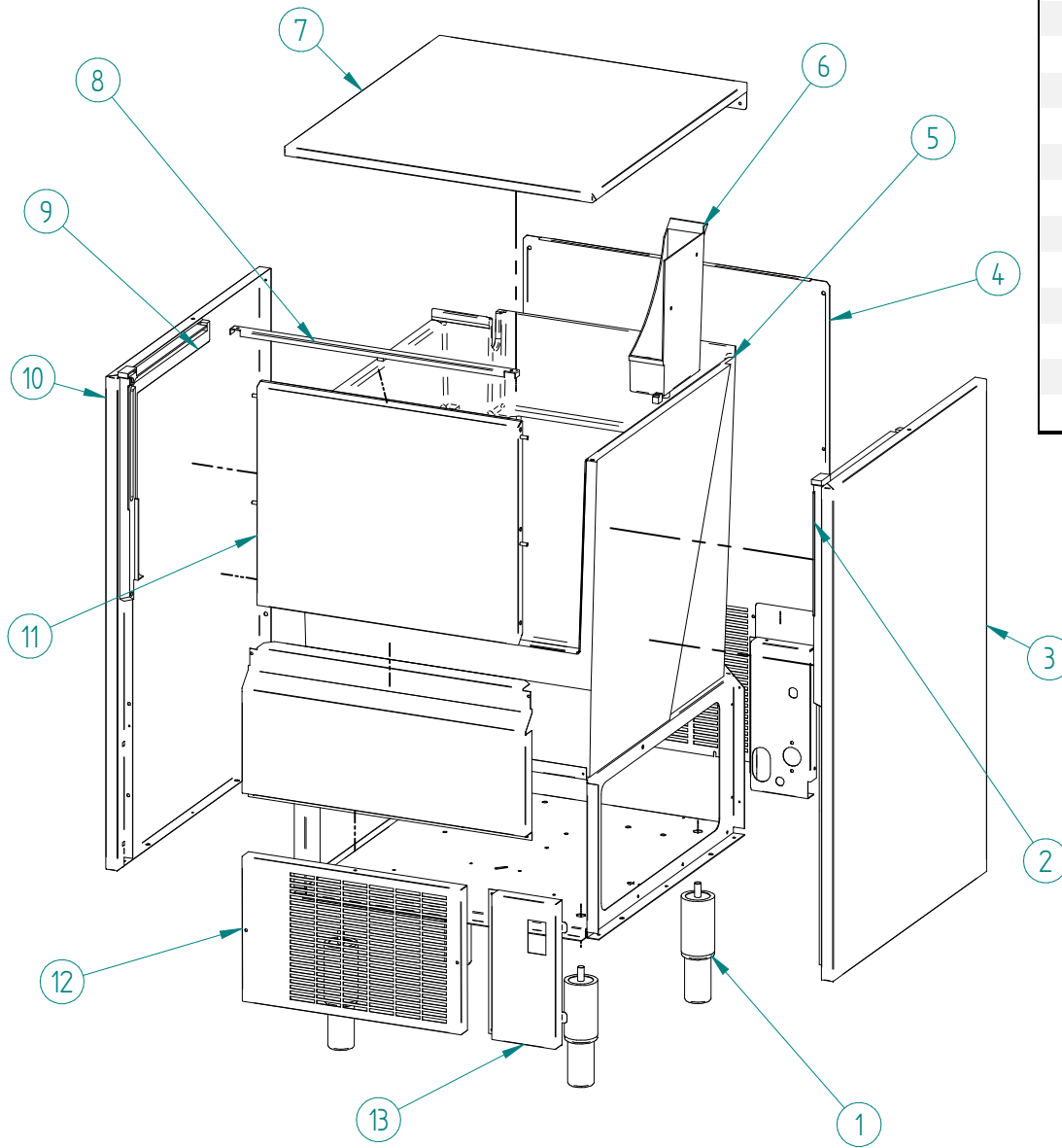


ITEM	DESCRIPTION	22-32	42	52	62	82	122
1	WATER CONDENSER UPPER SUPPORT				4036		
2	WATER CONDENSER	8483		5243		5244	
3	WATER CONDENSER LOWER SUPPORT				4037		
4	WATER CONDENSER EXTERNAL SUPPORT				4038		
5	COMPRESSOR 220V/50HZ	31301	33302	33303		31306	31307
6	FAN CONTROL PRESSURE SWITCH				31160E		
7	HIGH PRESSURE SWITCH				31660E		
8	PRESSURE SWITCH COLLECTOR				31444		
9	HOT GAS VALVE - COIL 220V/50HZ	6906				5173	
10	FILTER DRIER				7896		
11	CLIP TUBE	337				3533	
12	HOT GAS VALVE - BODY	6904				1473	

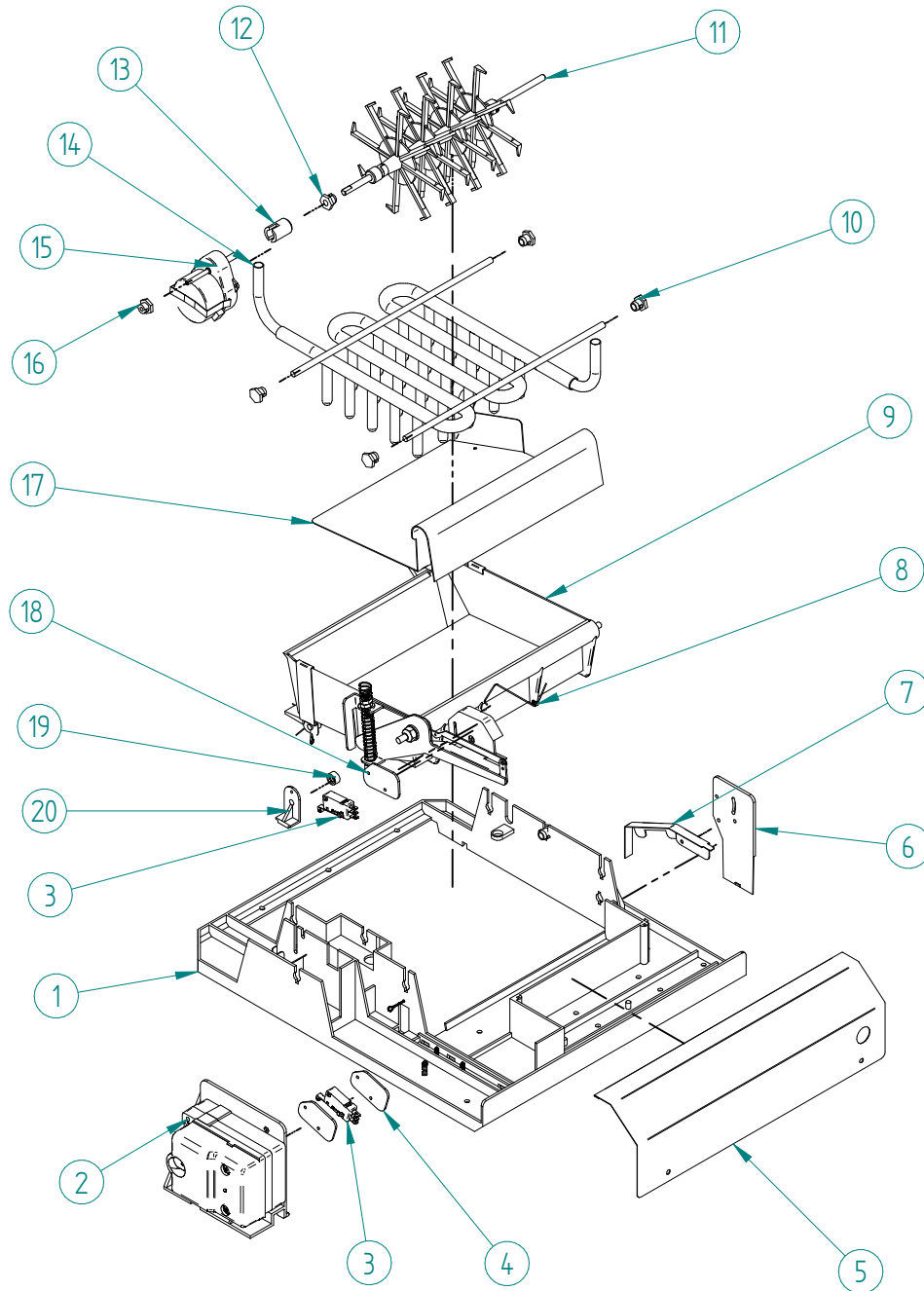


ITEM	DESCRIPTION	22-42	52-122
1	ELECTRIC BOX		2181
2	ELECTRONIC BOARD 220V/50HZ		32715
3	ELECTRIC BOX COVER		2182
4	CLEANING SWITCH		31719
5	MAIN SWITCH		32416
6	LED		32415
7	INLET WATER VALVE SIMPLE 220V/50HZ		329
	INLET WATER VALVE DOUBLE 220V/50HZ	404	6981

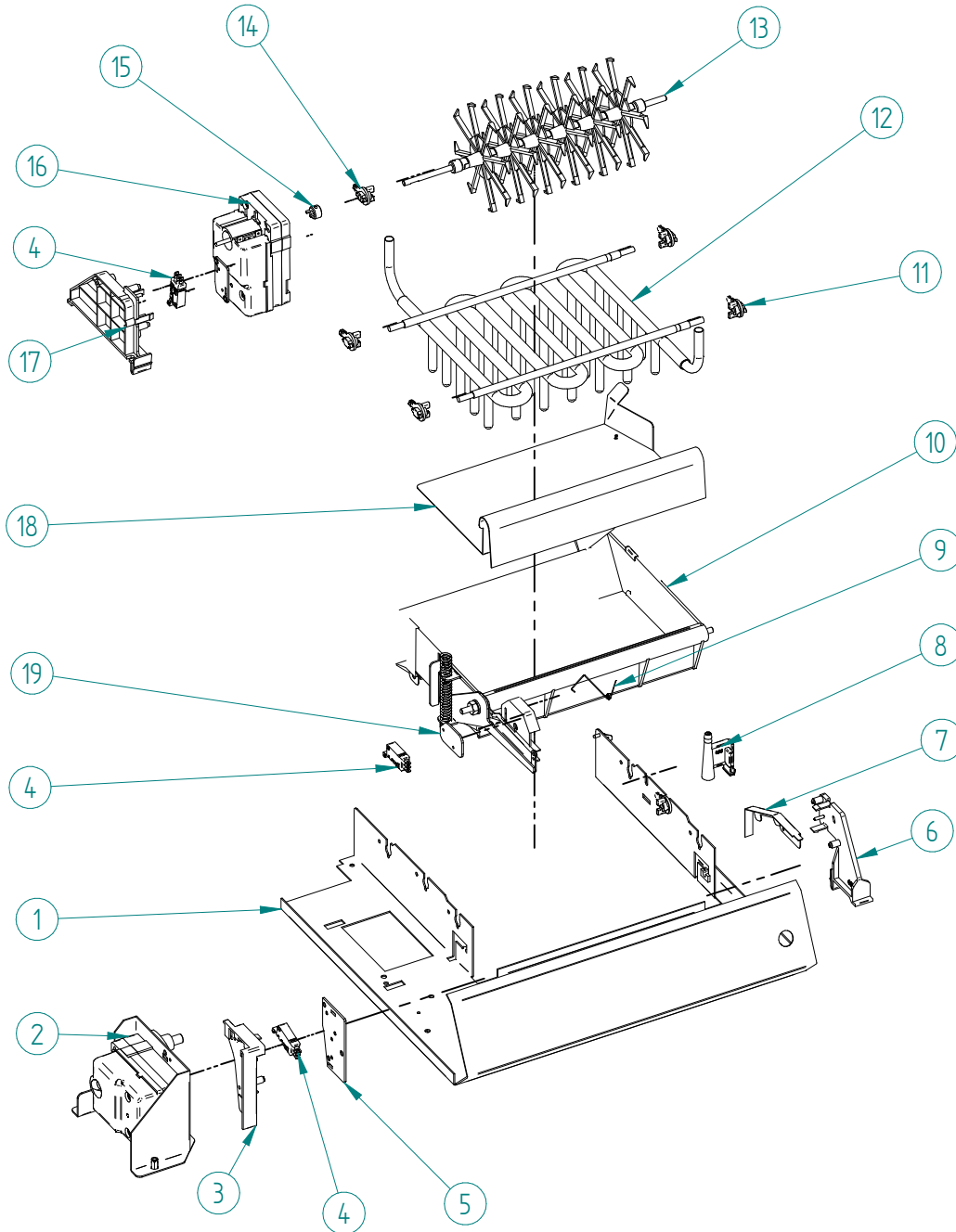




ITEM	DESCRIPCION	22	32-42	52	62	82	122
1	LEGS	2171			1478		
2	RIGHT DOOR GUIDE	1700			1706		
3	RIGHT PANEL	8057	8059	8487	8517	8553B	
4	REAR COVER	8063	8064	8490	8520	8556	8557
5	BIN	7510	8413	7513	7514	7515	7516
6	DRAIN BIN			593			
7	TOP PANEL	8056		8491	8521	8559	8560
8	UPPER REINFORCEMENT	8217		8495	8523	8524	8525
9	LEFT DOOR GUIDE	1701			1707		
10	LEFT PANEL	8058	8060	8488	8518	8554B	
11	DOOR	8512		8579	30541	30542	30543
12	FRONT LOUVER	8513U		8719	8720		34044
13	SUPPORT GRILL	N/A		8492U	8522U	8561U	8562U



ITEM	DESCRIPTION	22	32-42
1	HYDRAULIC BASEMENT	175	
2	MOTOR ASSEMBLY WITH MICRO	8071U	
3	MICRO SWITCH	32998	
4	MICRO PROTECTION	5212	
5	FRONT COVER	32973	
6	WATER LEVEL SENSOR SUPPORT	595	
7	WATER LEVEL SENSOR	32971	
8	STOP SPRING	31508	
9	WATER TRAY ASSEMBLY	5360U	5361U
10	EVAPORATOR SUPPORT	564	
11	PADDLE	8074	
12	PADDLE BEARING	556	
13	PADDLE MOTOR COUPLING BUSH	46	
14	EVAPORATOR	7984	7989
15	PADDLE MOTOR	5364	
16	EXTERNAL PADDLE BEARING	554	
17	ICE CUBE RAMP	5537	5532
18	MICRO PROTECTION	5211	
19	WATER TRAY SUPPLEMENT	674	
20	TRAY AXIS SUPPORT	558	



ITEM	DESCRIPTION	52	62	82	122
1	HYDRAULIC BASEMENT	8496U	8526U	8527U	8528U
2	MOTOR ASSEMBLY WITH MICRO		8507		
3	MICRO SWITCH		6846		
4	MICRO PROTECTION		32998		
5	FRONT COVER		6847		
6	WATER LEVEL SENSOR SUPPORT		6844		
7	WATER LEVEL SENSOR		32971		
8	STOP SPRING		6843		
9	WATER TRAY ASSEMBLY		31508		
10	EVAPORATOR SUPPORT	5203U	5204U	5205U	5273U
11	PADDLE		6841		
12	PADDLE BEARING	7998	8022	8027	8032
13	PADDLE MOTOR COUPLING BUSH	8503	8541	8545	8546
14	EVAPORATOR		6842		
15	PADDLE MOTOR		30270		
16	EXTERNAL PADDLE BEARING		6837		
17	ICE CUBE RAMP		6848		
18	MICRO PROTECTION	8727	5539	5540	5530
19	WATER TRAY SUPPLEMENT		5211		