

## HOW TO CHANGE THE WATER PUMP ON THE ICE TECH SS 80, FROM CODE 4556 TO 8687K

Manual on how to change the water pump in the Ice Tech SS80. The new water pump, code 8687K, is a magnetic pump, with no bearings.

To change the pump, first disconnect the unit from water and electricity.

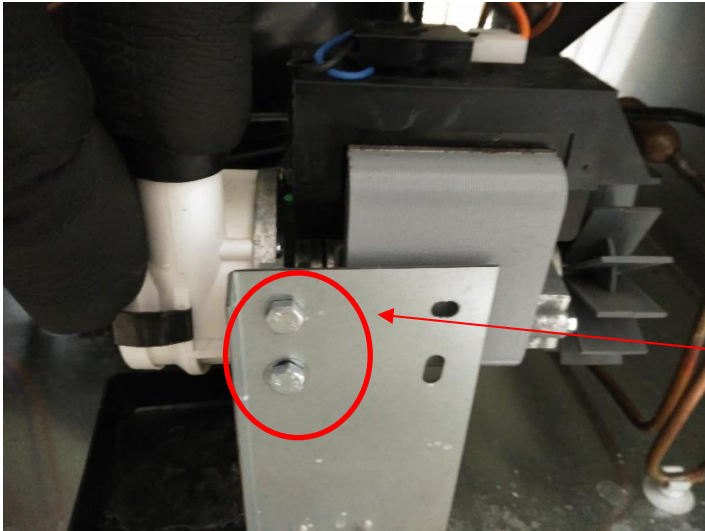
Empty the water bin, removing the overflow pipe.



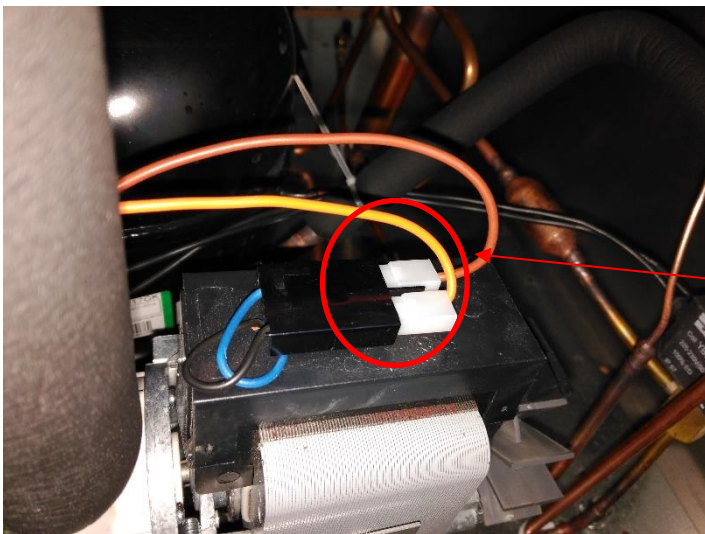
*Overflow pipe*

Connect the unit to the electricity and start the fabrication to allow the water inside the pump and the tubes to exit (a few seconds). Then disconnect again.

Disassemble the original water pump, to assemble the new on, using the pipe that comes with it. Remember to disconnect the power cables that go to the pump and connect them again in the new pump.



Unscrew the two screws to release the pump



Disconnect the power to the pump



*Water pump kit with pipe*

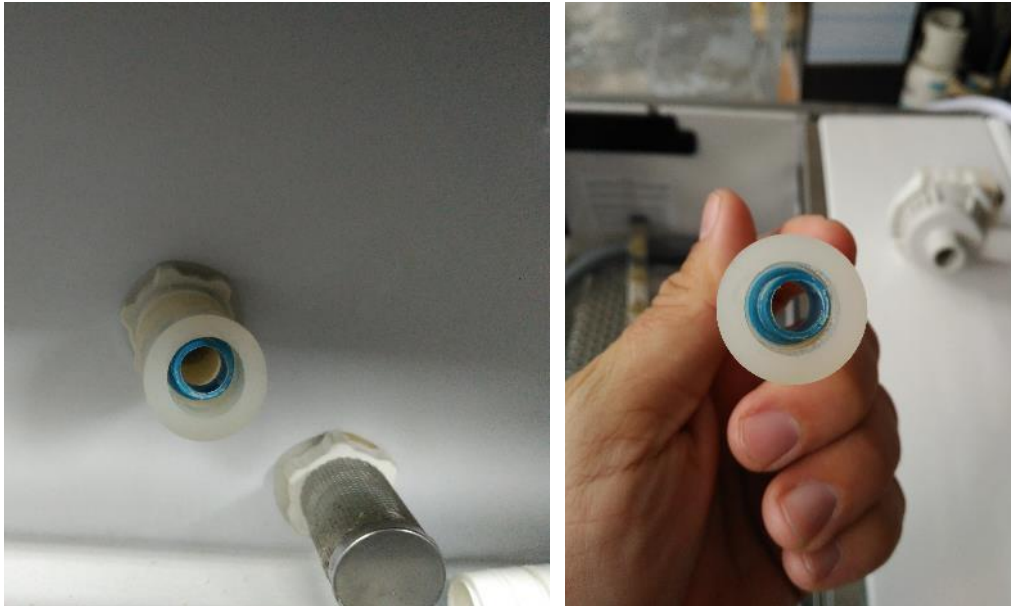


New pipe  
pump  
aspiration

*New water pump*

Disassemble the water collector, and then remove the blue restrictor, as shown in the pictures below. Then assemble again without the restrictor.





*Blue restrictor inside the pipe connecting the pump and the water collector*



*Pipe without the water collector*

Assemble all the rest of the unit, like the ice cube ramp, the curtain.

Connect the unit to electricity and water, and start the unit. Remember to do two harvest cycles before fabricating, to fill the water bin.